

20 : **HEAD START**
: **EARLY HEAD START**
22 : **ANNUAL**
: **REPORT**



— EPISCOPAL —
**Children's
Services**

BELIEVE. ACHIEVE. SOAR.

DEAR FRIENDS AND SUPPORTERS,

Every child has their unique strengths and our program work to develop those strengths into the skills that need for the rest of their lives.

And every member of the team at Episcopal Children's Services brings their unique strengths to our most important work – to provide the best early education possible for our community's most vulnerable children and families.

Our teachers create learning experiences that utilize children's creative and critical thinking so that they become confident to begin kindergarten. Our staff engages with each family that we serve with empathy and respect so that each parent and caregiver can do their most important work – to be their child's first, and most important, teacher. Our community partners collaborate with us to bring their programs and services to those we collectively serve. Our supporters and funders invest their resources, giving us the capacity to do this transformative work.

Every person involved in the work of Episcopal Children's Services is making a direct and positive impact for our children, our families, and our community.

We are so grateful to all of you because, together, we are changing the lives of thousands of children each year.



Connie Stophel
Chief Executive Officer



Thabata Ford
Board President

THE MISSION OF EPISCOPAL CHILDREN'S SERVICES

is to create opportunity so that the children we serve can achieve their full potential.

CREATE

We continually improve the art and skill of teaching young children to grow intellectually, emotionally, physically, and socially.

OPPORTUNITY

We build foundations for the future with strong learning environments for children, support and education for parents, and professional development for teachers and staff.

THE CHILDREN WE SERVE

We serve our community's most vulnerable children and families - those living in poverty and children with disabilities - with high quality early learning as well as comprehensive health and wellness services.

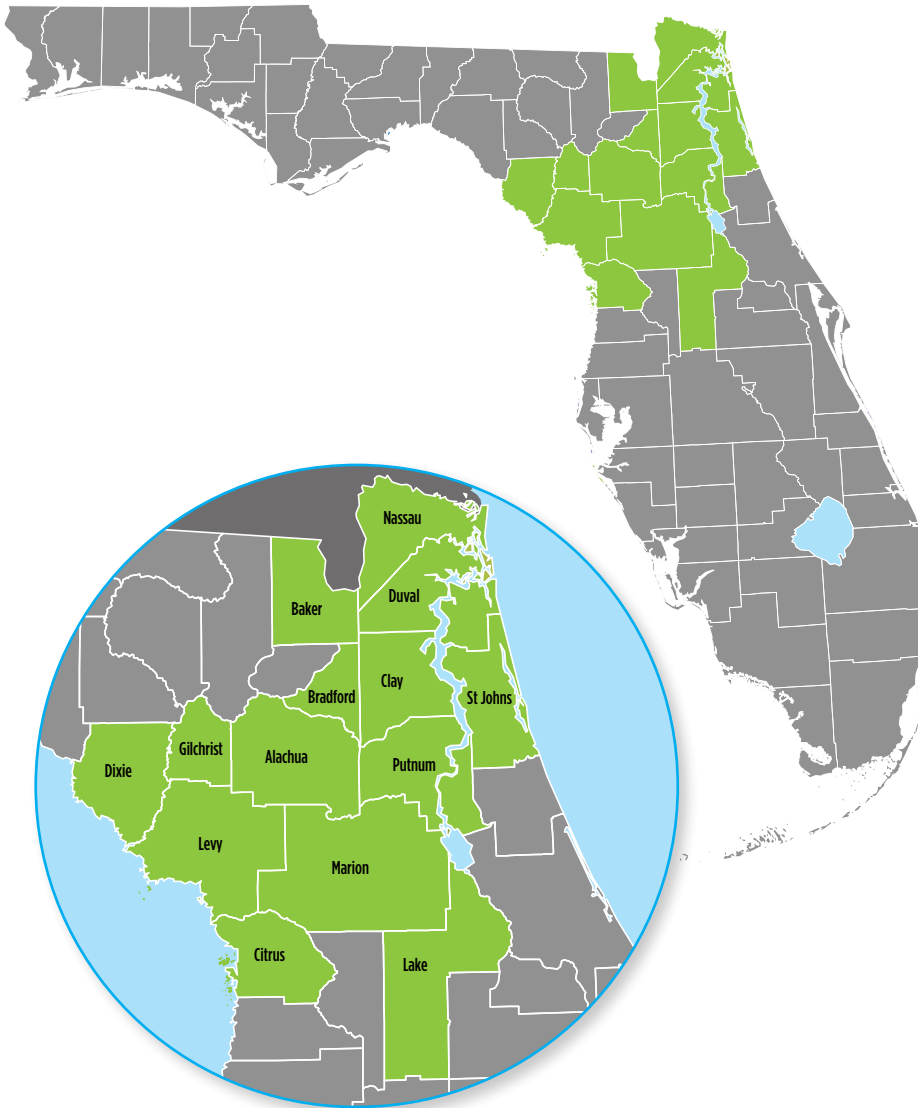
ACHIEVE THEIR FULL POTENTIAL

Children who enter kindergarten ready to learn have better outcomes for their entire lives. It all begins with quality early learning.





PROGRAM LOCATIONS



Episcopal Children's Services provides the Head Start and Early Head Start program across twelve counties in North and Central Florida. Despite the pandemic, we have made great strides in continuing to open locations for our newest grant in Alachua County with **average monthly enrollment of 71%, up from 48% last year.**

Our other four grants in North Florida, Central Florida, Duval, and Lake continue their strong results, **achieving average monthly enrollment of over 96%.**

POLICY COUNCIL OFFICERS

REGION I 2021-2022

Shayla Barker, Chair
Antonia Knox, Vice Chair
Rand Fadhil, Secretary

REGION II & III 2021-2022

Kayla Poser, Chair
Jennifer Goode, Vice Chair/Secretary



BOARD OF TRUSTEES

Thabata Ford **Board President**

Baptist Medical Center and
Wolfson Children's Hospital

Vicki Adams
Immediate Past Board President
Clay County Sheriff's Office

Fr. Wiley Ammons
Board Vice President
Episcopal Diocese of Florida

Joel C. Chamberlain
Board Treasurer
CPA/PFS, MACC,
Financial Solution Advisors, PLLC

Christine H. Smith
Board Secretary
Baptist Health

Malachi Beyah
Head Start Policy Council Liaison
M & M Maintenance Plus, Inc.

Yared Alula
PGA Tour, Inc

Karyn Carroll
Quest Diagnostics

The Rt. Rev. Samuel Johnson Howard
Bishop of Florida

Adrien Malek-Lasater
University of North Florida

Karen Estella Smith
St. Johns Riverkeeper

Destinee Disher Swanson
Grant Thornton

John Thomas
Smith Hulsey & Busey

Christian Winterbottom, Ph.D.
University of North Florida

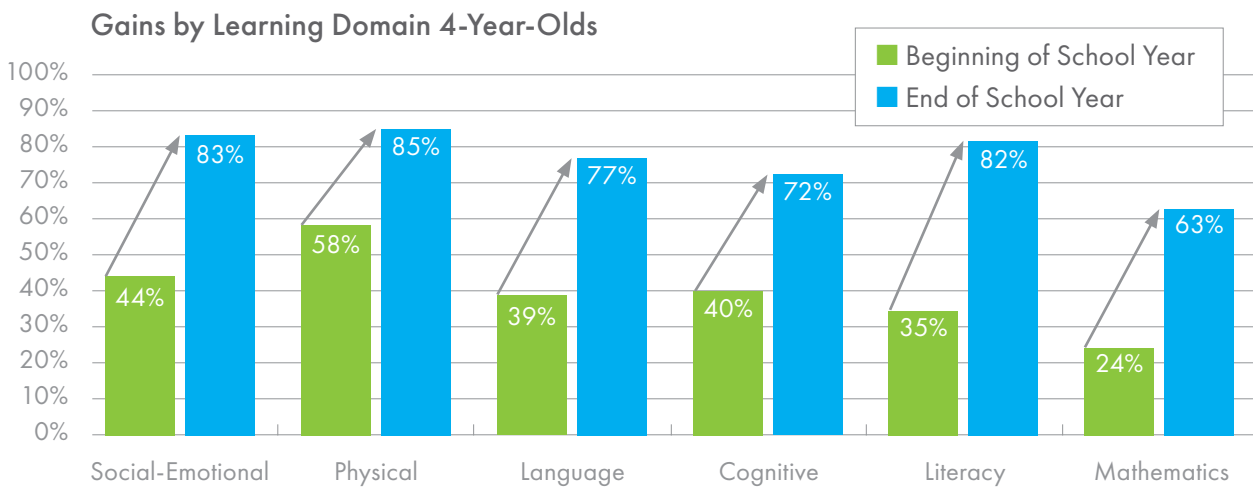
PREPARING CHILDREN FOR SCHOOL SUCCESS

Our Head Start/Early Head Start program provides comprehensive education, health, and nutrition services to our community's most vulnerable pregnant women, infants, toddlers, and preschoolers and their families. Our young students and pregnant women receive intensive child development services. Parents receive education and support for family well-being as well as tools to support their children's success in school.



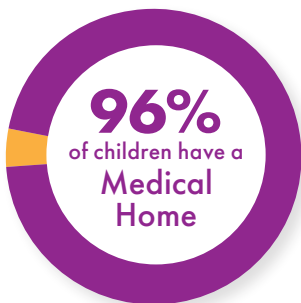
ACADEMIC SUCCESS

Our children make tremendous gains across all learning domains, with individualized instructions from well-qualified teachers. When children begin school armed with skills and knowledge, they are more likely to graduate high school and attend college, be employed with a livable income, engage in healthy behaviors, and contribute to their community.



CHILDREN'S HEALTH AND WELL-BEING

Children must be healthy to learn. Living in poverty often means a lack of nutritious healthy food, limited opportunities for outside physical activity and inadequate health care. We directly address these issues with a robust nutrition plan, outdoor play areas filled with opportunities to explore and grow, and health screenings and services provided by our staff and community partners.



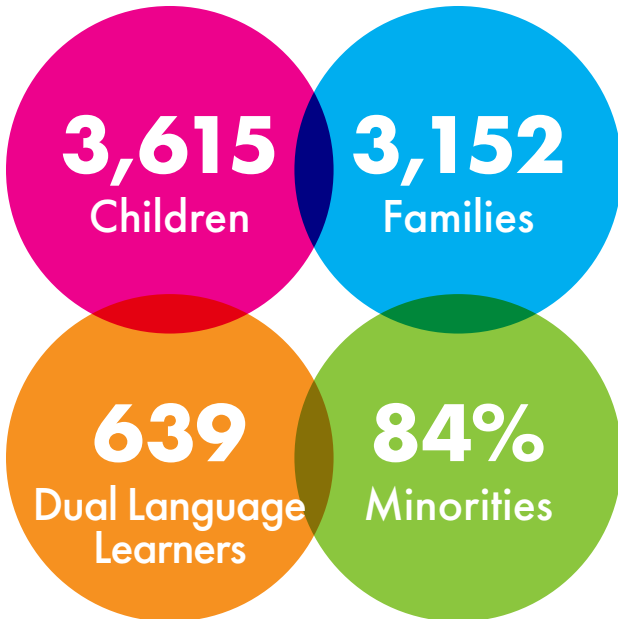
545,458
Healthy Meals
and Snacks





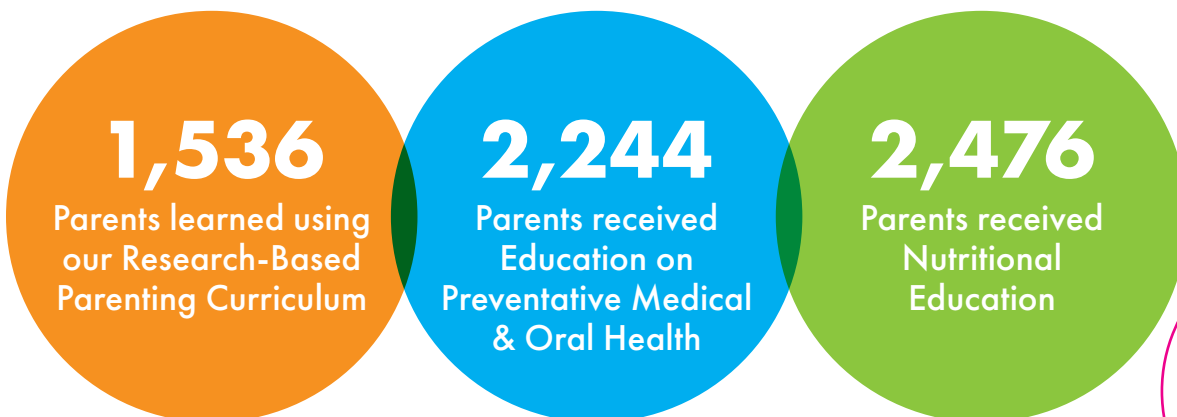
ENROLLMENT

Our selection criteria ensure that we provide service to our community's most vulnerable children and families. To ensure we are serving those with the most acute needs, we prioritize families with low incomes, those experiencing homelessness, households receiving public assistance, children with disabilities, and children in foster care.



PARENT ENGAGEMENT

We work to support family well-being and promote children's development. Our parents focus on learning skills to support their children. Episcopal Children's Services directly supports the economic needs of low-income families because childcare costs create a significant barrier to employment, education, and job training. Because our services are provided to families at no cost, our families can direct their limited budgets to other life necessities.



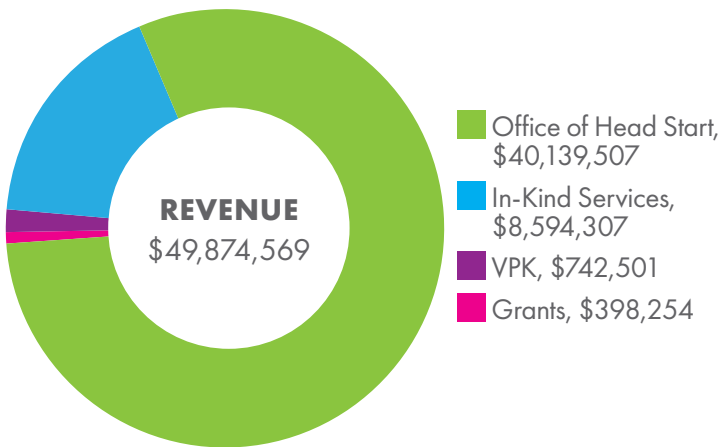
FINANCIAL PERFORMANCE

Revenues for the Head Start/Early Head Start program are received from both public and private sources. The Office of Head Start is the largest public funder, followed by the U.S. Department of Agriculture funds supporting the nutrition program. Voluntary Pre-Kindergarten funds are supported by the State of Florida. In-kind donations are received from the community for volunteer and donated services, and grants are received from United Way, corporations, local government, and foundations. Expenses are shown for the major cost categories used by the Office of Head Start.

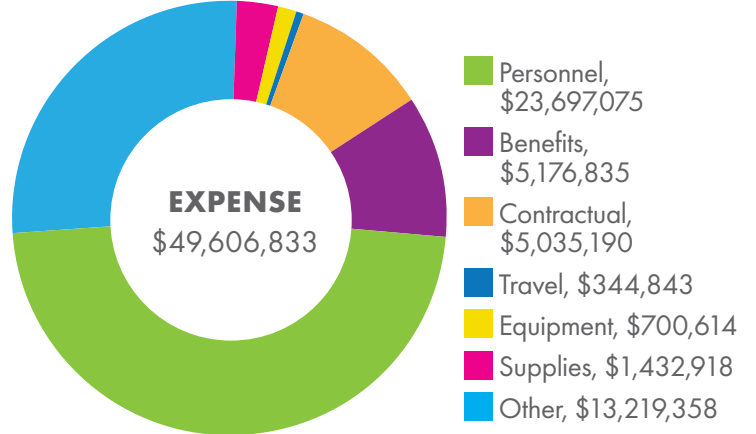
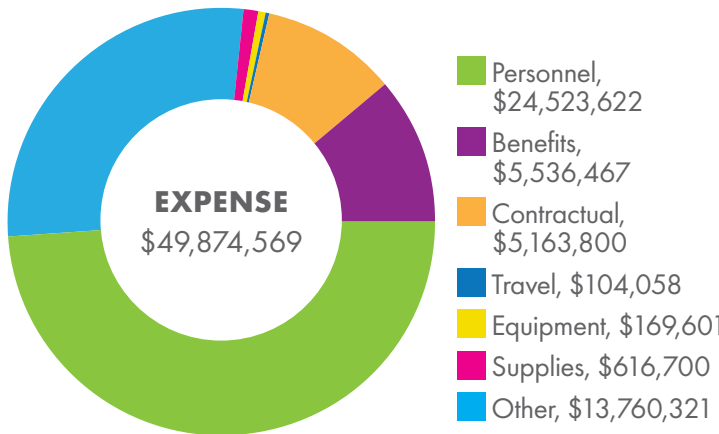
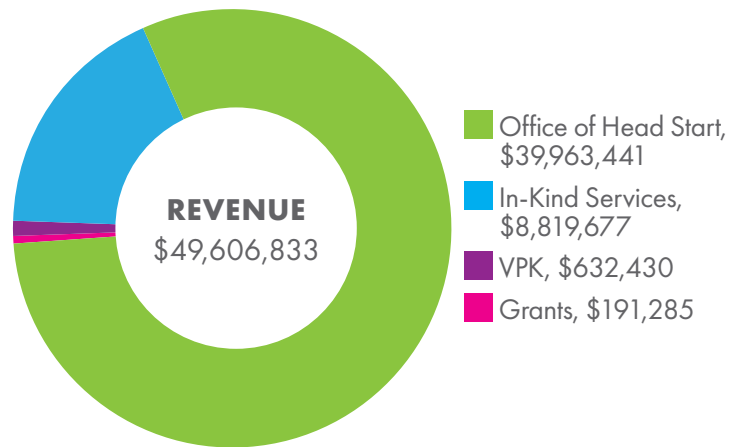
FEDERAL REVIEW

Episcopal Children’s Services is justifiably proud of the results of our most recent Monitoring Review by the Administration for Children and Families. Our program met 100% of the standards evaluated.

2022-2023 PERFORMANCE



2021-2022 PERFORMANCE





COMMUNITY SUPPORT

The Office of Head Start intentionally provides funding for only 80% of program operations. Episcopal Children's Services must demonstrate the community's commitment by raising an additional 20 cents for every federal dollar received. That's a small price to pay to ensure our community is preparing our youngest citizens to enter school ready to learn.

GIVING TREE

Every child should have presents during the holiday season and our community is always willing to help. Because of our wonderful donors, we were able to provide presents for all our HS/EHS children.



VOLUNTEERS

Parent and community volunteers are critical to the effective operation of our program.

2,603 Total Volunteers

262,860 Hours Invested

\$5,342,929 Estimated Work Value





— EPISCOPAL —
**Children's
Services**

BELIEVE. ACHIEVE. SOAR.

8649 Baypine Road, Ste. 300, Bldg. 7 | Jacksonville, FL 32256
904.726.1500 | www.ecs4kids.org